

BUILDING THE FUTURE THROUGH THE UNGLAMOUROUS WORK OF CARE + MAINTENANCE

... and re-considering what it means
to 'innovate through infrastructure'



S. ASHLEIGH WEEDEN, MPA

weedens@uoguelph.ca | @ashleighweeden | www.ruraldev.ca/ashleigh-weeden

PhD Candidate, School of Environmental Design & Rural Development - University of Guelph



COVID-19 HAS **NOT** BEEN
AN 'EQUALIZER'...

TECHNOLOGY HAS **NOT**
BEEN UNIVERSALLY
LIBERATING...

'NORMAL' WAS **NOT**
WORKING

And yes, that means we're all on the hook for the hard stuff..

HOW DID WE GET **HERE?**

- + Rise of 'economic development' policy + practitioners post-WW2 (... crises are at the foundation of our work)**
- + Assumption that unlimited economic growth is good... without consideration of broader + necessary social, economic, and political contexts + constraints**
- + Conflict between policy and practice: what we say, what we do, who we serve, how we decide, who counts**
- + Appropriation + abdication of public stewardship for narrowly defined private interests, leading to erosion of social, physical, and financial public capital**





○ This moment is a reminder that the status quo can and must be disrupted. We are standing on the threshold between the old world and the next...

and we must choose to build the future we want.

QUOTE FROM [JUSTRECOVERYFORALL.CA](https://justrecoveryforall.ca)



WE'RE **NOT** ALL IN
THE **SAME BOAT**
EVEN IF WE'RE IN
THE **SAME STORM**

*You might even call it a **goat rodeo**...*

**UNCERTAIN +
UNCOMFORTABLE**

**DO NOT RUSH TO A
"NEW NORMAL"**

**EMBRACE
THE PAUSE**

**+ Stop Glorifying
Resilience /
Make Resilience
the Exception**

**+ Community Centered
First + Always**

**+ Transformative Power
of Care + Maintenance**

**+ Collaborative
Capacity Development**



THIS IS **NOT** FAST WORK

THIS IS THE UNGLAMOUROUS
WORK OF CARE + MAINTENANCE

THERE IS NO MAGIC CURE

"FIRST THE RAPTURE...
THEN THE DISHES"

We're not going to get out of this mess without confronting the uncomfortable truths it has exposed. All of us are on the hook for making sure social, economic, and environmental justice are made foundational elements of whatever we get involved in from here on out. Ask hard questions, and be ready to answer with something actionable.

INFRASTRUCTURE IS **NOT** NEUTRAL.

Programmatic responses cannot meaningfully overcome systemic and structural challenges. Local decision makers, community organizations, and researchers must all contribute their skills to radially re-imagining how we serve & support our communities. Do not wait for someone else to come to the rescue - they may never arrive. Make no small plans, but remember to show up today in a way that makes it possible to show up tomorrow and the day after...

INNOVATING THROUGH INFRASTRUCTURE WILL REQUIRE **COMMITMENT TO COLLABORATION.**

We cannot dismantle structurally dysfunctional systems using the same tools used to create those conditions in the first place. Reinventing how we connect, create, and serve requires us to question and commit to aligning values and actions. Ground yourself in the place that is the centre of your universe.

LEARNED HELPLESSNESS + INACTION CAN HAVE THE SAME **HARMFUL CONSEQUENCES AS MALICIOUS INTENT.**



IT'S TIME TO PAY ATTENTION

DEFERRED MAINTENANCE IS DANGEROUS
ACROSS ALL PORTFOLIOS: INFRASTRUCTURE,
SOCIAL SAFETY NETS, ECONOMIC
DIVERSIFICATION, ENVIRONMENTAL
MANAGEMENT...

NO MORE SHINY-OBJECT-STRATEGIES

INNOVATION IS OVER,
LONG-LIVE INNOVATION

**A poorly maintained power
transposition tower has cost
\$16+BILLION & 85 lives:**

<https://twitter.com/TubeTimeUS/status/1306359385656946688>

**Underinvestment left our social safety
nets underprepared for economic crisis**

<https://www.theglobeandmail.com/opinion/article-covid-19-has-exposed-wide-gaps-in-canadas-social-safety-net/>

**Over-reliance on tourism leaves
rural communities vulnerable**

<https://www.cbc.ca/news/canada/newfoundland-labrador/salvage-dildo-jimmy-kimmel-nl-tourism-covid-19-1.5564314>

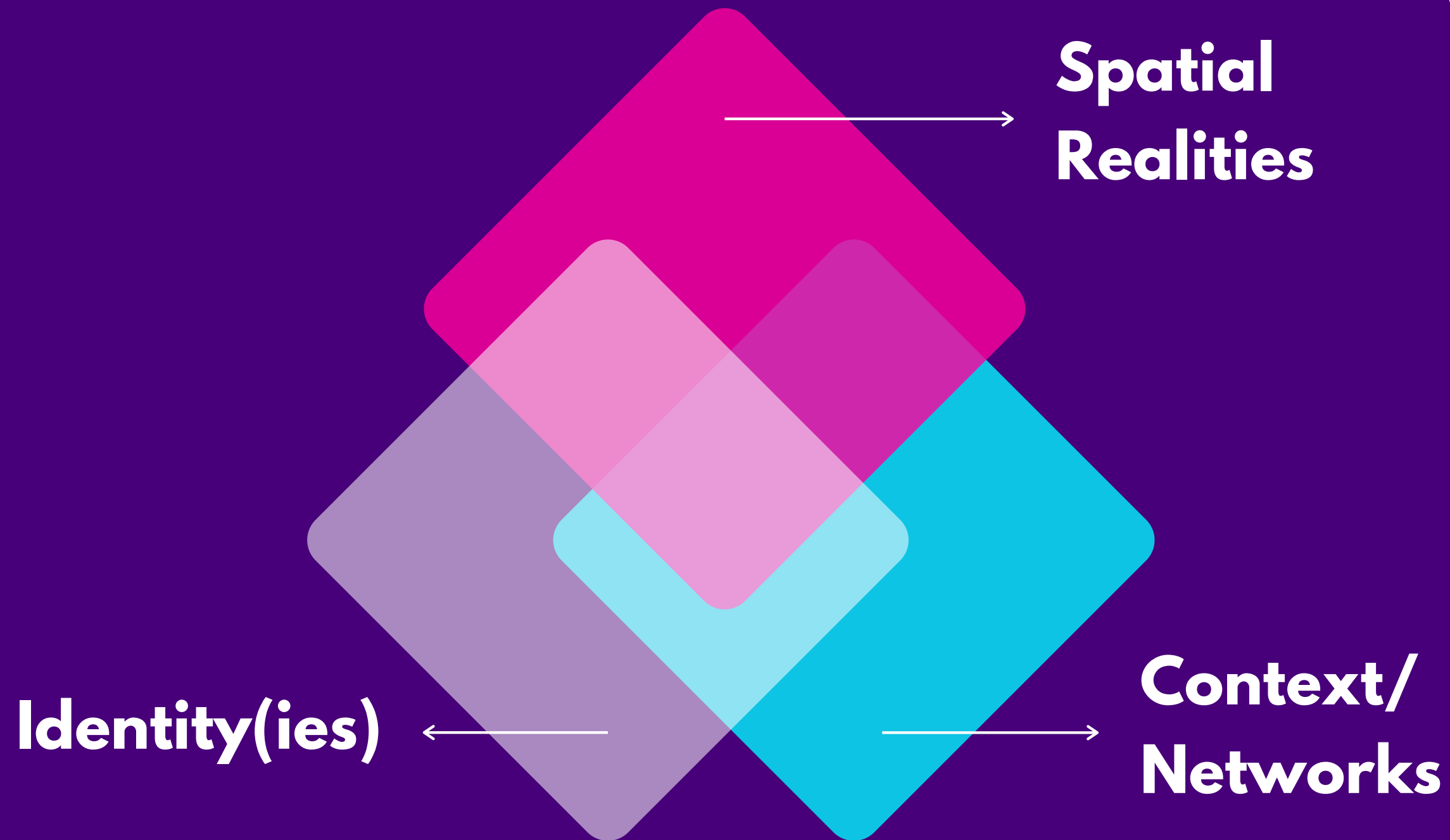
**No more smart cities,
let's build democratic digital futures**

<https://www.cigionline.org/articles/searching-smart-citys-democratic-future>
<https://theurbantechnologist.com/2016/02/01/why-smart-cities-still-arent-working-for-us-after-20-years-and-how-we-can-fix-them/>

**Building the future: Rural
infrastructure & regional economic
development**

<http://ruraldev.ca/infrastructure/>

THE FUTURE IS PLACE-BASED





WHAT DOES THIS LOOK LIKE IN PRACTICE?

HOW DO WE LEVERAGE OUR EMBEDDED
+ EMBODIED EXPERIENCE TO SUPPORT
INVESTMENT IN THE PLACES WHERE WE
HAVE LEARNED + EARNED THAT
EXPERTISE



The Islands Revival Declaration (Scotland, United Kingdom)

<https://islandsrevival.org/the-islands-revival-declaration/>

Southwestern Integrated Fibre Technology Inc: Connecting Southwestern Ontario

<https://swiftruralbroadband.ca/>

Indigenomics Institute

<http://indigenomicsinstitute.com/>

The51: Financial Feminist Platform

<https://the51.com/>

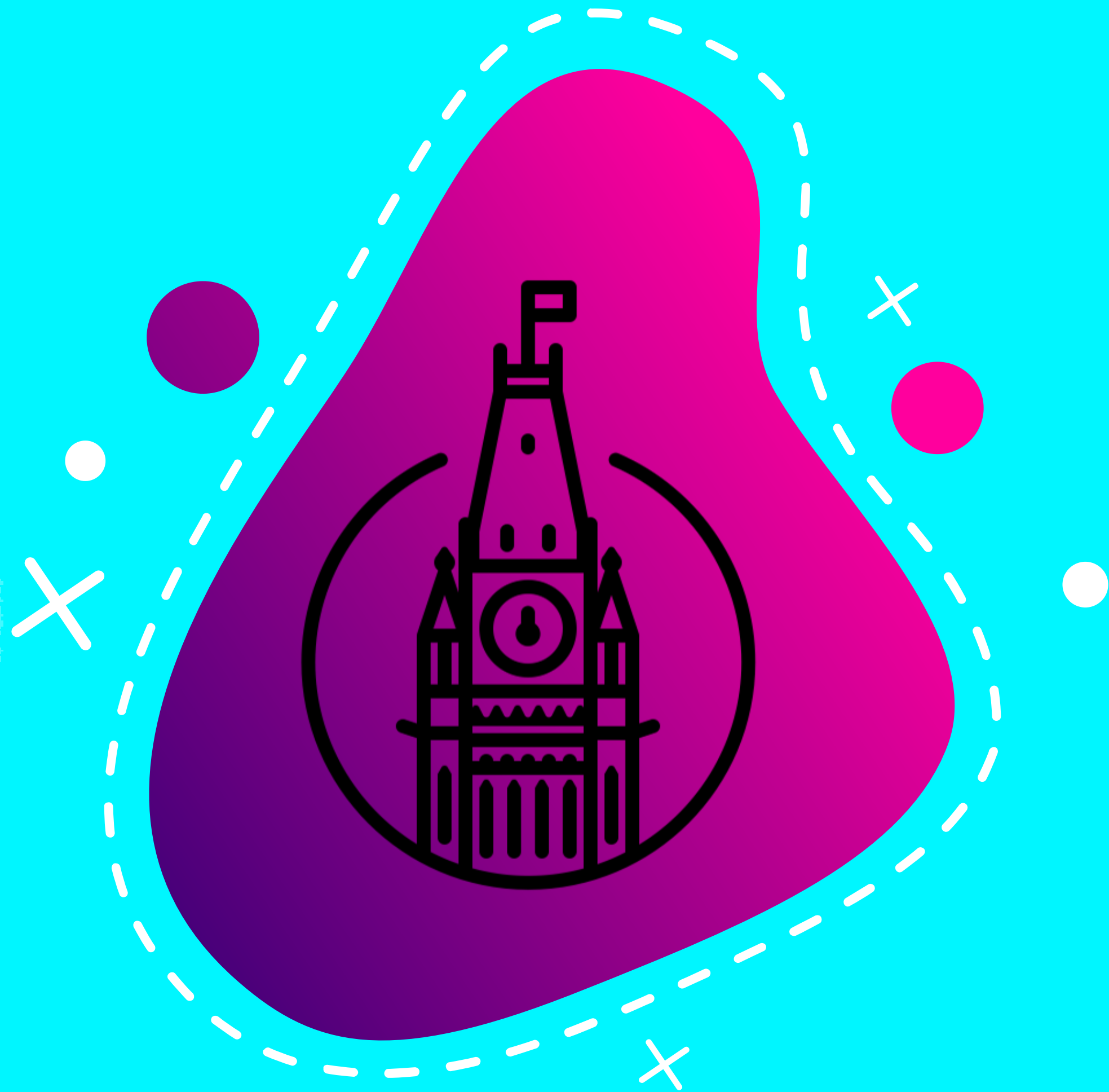
Sutherland Spaceport (Scotland)

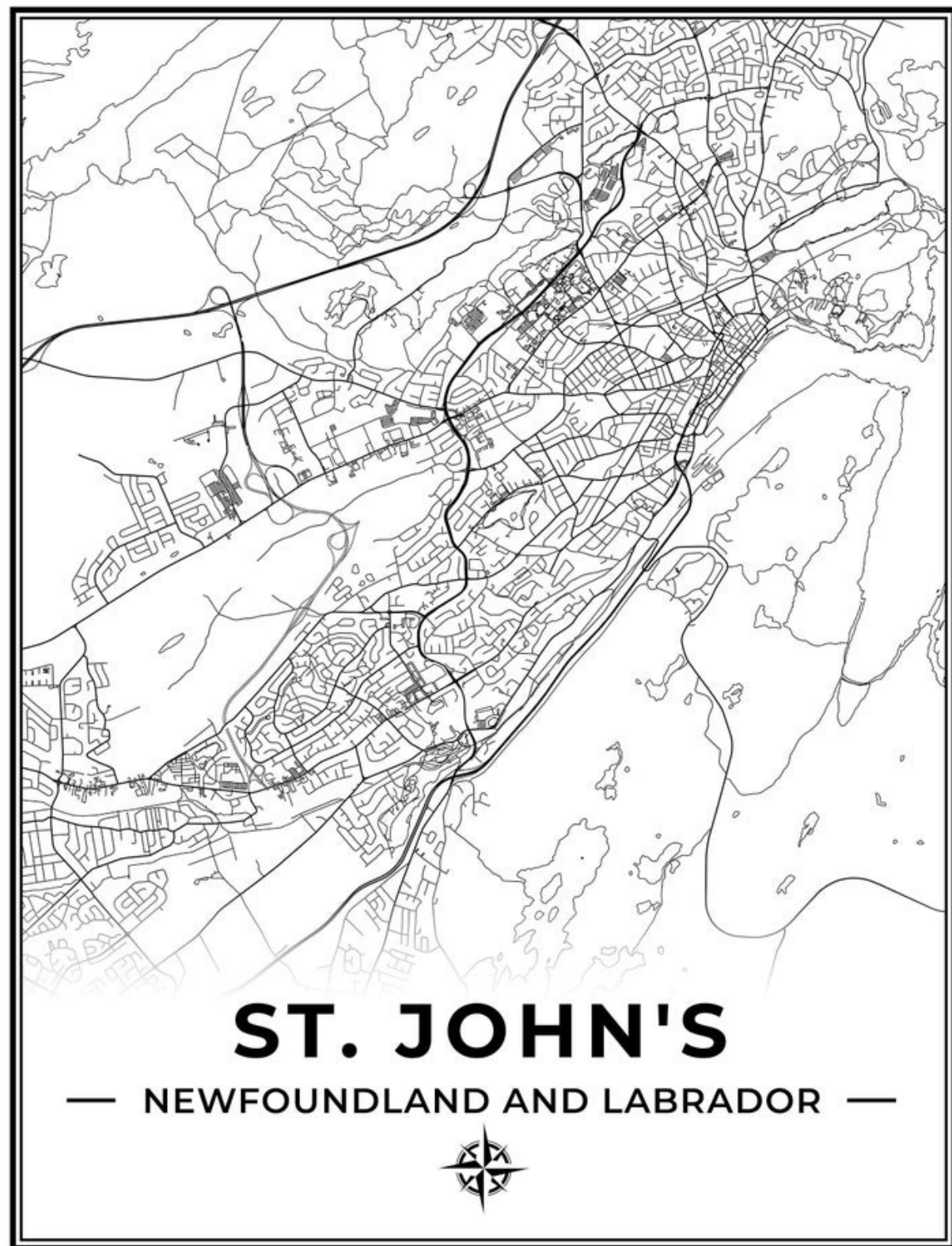
<https://www.theguardian.com/uk-news/2020/oct/09/remote-scottish-peninsula-could-be-host-to-spaceport-two-years-mhoine-peninsula-in-sutherland>

FCM Asset Management Insights + Climate Innovation Program

<https://fcm.ca/en/resources/mcip/municipalities-climate-innovation-program-year-4-in-review>
<https://fcm.ca/en/resources/mamp/asset-management-insights-policy-and-governance>

**THIS
IS
NOT
THE
CENTRE
OF
THE
UNIVERSE**





**THIS
IS
NOT
THE
CENTRE
OF
THE
UNIVERSE**

PRINT AVAILABLE FROM SALTWRECK ON ETSY.CA



**THIS
IS THE
CENTRE
OF
MY
UNIVERSE**

**WHERE'S
YOURS?**

PRINT AVAILABLE FROM WWW.SADIEANDJUNE.CA

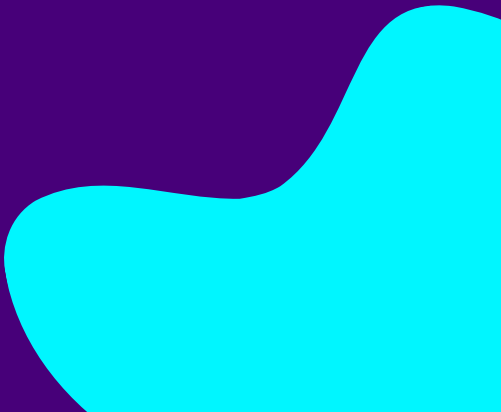


DON'T GET DISTRACTED.

Your first and last question should always be:

"so what?"

We can get easily drawn into letting funding announcements drive our priorities, allow temporary/'band-aid' interventions to continue on too long, or lean too heavily on identities attached to being 'on the edge' without investing in our local capacities. Infrastructure is a critical priority for the current + future vitality of your community - make sure it's working in your best interests.



GET IN TOUCH

TWITTER: @ASHLEIGHWEEDEN

EMAIL: WEEDENS@UOGUELPH.CA

WWW.RURALDEV.CA/ASHLEIGH-WEEDEN





SOME MORE THINGS TO CONSIDER

*Words, ideas, and
questions...*

How Canada's rural communities can become innovation hubs:

<https://torontoist.com/2016/10/how-canadas-rural-communities-can-become-innovation-hubs/>

CRRF Rural Insights Series: COVID-19

www.crrf.ca/covid-19

Radical Rurality: Imaging Multiple Futures Beyond City Limits:

<https://some-thoughts.org/weeden.html>

Will post-COVID policies realize the full potential of rural Canada?

<https://policyoptions.irpp.org/magazines/july-2020/will-post-covid-policies-realize-the-full-potential-of-rural-canada/>

The coronavirus pandemic is pushing Canadians out of cities and into the countryside

<https://theconversation.com/the-coronavirus-pandemic-is-pushing-canadians-out-of-cities-and-into-the-countryside-144479>



SOME MORE THINGS TO CONSIDER

*Words, ideas, and
questions...*

Just Recovery for All:
<https://justrecoveryforall.ca/>

A Feminist Recovery Plan for Canada
<https://www.feministrecovery.ca/>

**Joint CED Sector Recommendations for
the Recovery and Post-COVID Economy**
<https://ccednet-rcdec.ca/en/new-in-ced/2020/05/14/sector-recommendations-recovery-and-post-covid>

Build Back Better
https://www.rotman.utoronto.ca/ProfessionalDevelopment/managing_uncertainty_webinar/Build_Back_Better_After-COVID-19

Canadian Rural Revitalization Foundation
<https://www.crrf.ca/covid19>

**Uncertain Future: Infrastructure in Rural
Canada**
<http://rplc-capr.ca/wp-content/uploads/2015/12/Infrastructure-in-Rural-Canada-Report.pdf>