

Immigration Service Provision in the Guelph-Wellington Area

By-Menakah Yoharaja

Date- Saturday March 23rd, 2019.

Content

- Introduction
- Rural Immigration Challenge
- Background
- Findings
- Next Steps

Introduction

- Ontario is expected to receive 70 % more immigrants in the next 4 years, by expanding existing programs such as the PNP. Yet little emphasis is placed on expanding settlement services in rural and remote regions.
- Immigrant service provision has long been a challenge in rural Ontario.
- Most services are provided by the closest urban counterpart, with little understanding of the boundaries in which services are distributed.

Common Challenges in Rural Ontario

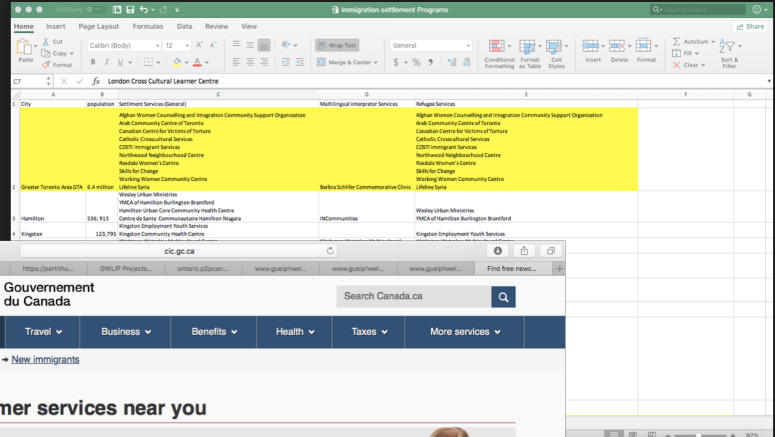
- There is an aging population, and the need for individuals to fill in the labor market in rural Ontario.
- Immigrants prefer to move to large urban centers where infrastructure reflects their ethnocultural needs.
 - Access to diverse community networks that allows them to integrate without the aid of settlement programs.

Common Challenges in Rural Ontario

- The lack of settlement resources make it challenging to integrate immigrant families, creating a less welcoming community.
 - Immigration retention becomes a challenge in rural and remote communities
 - Lack of transportation and knowledge of existing resources .

Cont'd...

- There are limited services located in rural and remote locations.
- Services provided do not specify:
 - The physical boundaries the services reach
 - The class of immigrants
 - Non- government funded agencies (such as churches)



The screenshot shows a Microsoft Excel spreadsheet titled "Immigration settlement Programs". The spreadsheet lists settlement services across various cities. The columns are: City, population, Settlement Services (General), Multilingual Interpreter Services, and Refugee Services. The cities listed are Greater Toronto Area, Hamilton, and Kingston. The services listed include various community centers, cultural services, and language classes.

City	population	Settlement Services (General)	Multilingual Interpreter Services	Refugee Services
Greater Toronto Area	5.4 million	Algonquin Settlement and Integration Community Support Organization, Arab Community Centre of Toronto, Canadian Centre for Women's Refuge, Catholic Crosscultural Services, CDP Immigrant Services, Northwest Neighbourhood Centre, Refugee Women's Centre, Skills for Change, Working Women Community Centre, Ujala-Saya	Algonquin Settlement and Integration Community Support Organization, Arab Community Centre of Toronto, Canadian Centre for Women's Refuge, Catholic Crosscultural Services, CDP Immigrant Services, Northwest Neighbourhood Centre, Refugee Women's Centre, Skills for Change, Working Women Community Centre, Ujala-Saya	Algonquin Settlement and Integration Community Support Organization, Arab Community Centre of Toronto, Canadian Centre for Women's Refuge, Catholic Crosscultural Services, CDP Immigrant Services, Northwest Neighbourhood Centre, Refugee Women's Centre, Skills for Change, Working Women Community Centre, Ujala-Saya
Hamilton	536,915	Wesley Urban Ministries, WCA of Hamilton Burlington Brantford, Hamilton Urban Food Community Health Centre, Centre de Santé Communautaire Hamilton Niagara, Kingston Employment Youth Services	Wesley Urban Ministries, WCA of Hamilton Burlington Brantford, Hamilton Urban Food Community Health Centre, Centre de Santé Communautaire Hamilton Niagara, Kingston Employment Youth Services	Wesley Urban Ministries, WCA of Hamilton Burlington Brantford, Hamilton Urban Food Community Health Centre, Centre de Santé Communautaire Hamilton Niagara, Kingston Employment Youth Services
Kingston	123,795	Kingston Community Health Centre	Kingston Community Health Centre	Kingston Community Health Centre

The screenshot also shows a web browser window displaying the Government of Canada website. The page is titled "Find free newcomer services near you" and features a banner with the text "SETTLING IN CANADA IS EASIER TOGETHER". Below the banner, there is a list of services and a section titled "Changes to impaired driving and cannabis-related crime laws".

Find free newcomer services near you

SETTLING IN CANADA IS EASIER TOGETHER

Friendly and experienced settlement professionals can help you:

- Look for a job
- Get a language assessment
- Register for language classes
- Find a place to live
- Fill out forms and applications
- Sign up your kids for school
- Learn about community services

Changes to impaired driving and cannabis-related crime laws

New penalties for impaired driving and cannabis-related crimes may affect your immigration status in Canada. If you commit one of these crimes, you may lose your status and have to leave Canada.

Area of Focus





Immigration directly
to Guelph-Wellington,
2006-2011

**approximate*



700^{*} newcomers
every year



Percentage of the population
that were immigrants born
outside of Canada, 2011



Guelph



11%

Wellington County

Background : Demographic Profile

CONT'D....



Top three languages of permanent residents*, 2011

Guelph

Chinese

Vietnamese

Punjabi

Wellington County

German

Dutch

Polish

* for immigrants
overall, not only
recent immigrants



Top industry for immigrant
employment in
Guelph-Wellington

Manufacturing



- Guelph tends to have more secondary immigrants who are not defined as newcomers to Canada, but are newcomers to the area.
- The majority of immigrants within the Guelph-Wellington Area are economic immigrants.

Survey Results : Success

- However, it was noted that immigrants found it difficult to access medical specialists, outside of the Guelph-Wellington area.
 - Lack of transportation
 - Language barrier



Some of what we learned indicates that things are going well.



Health



of respondents reported "very good" or "excellent" physical health



of respondents reported "very good" or "excellent" mental health



Health



90% of respondents are aware of health services

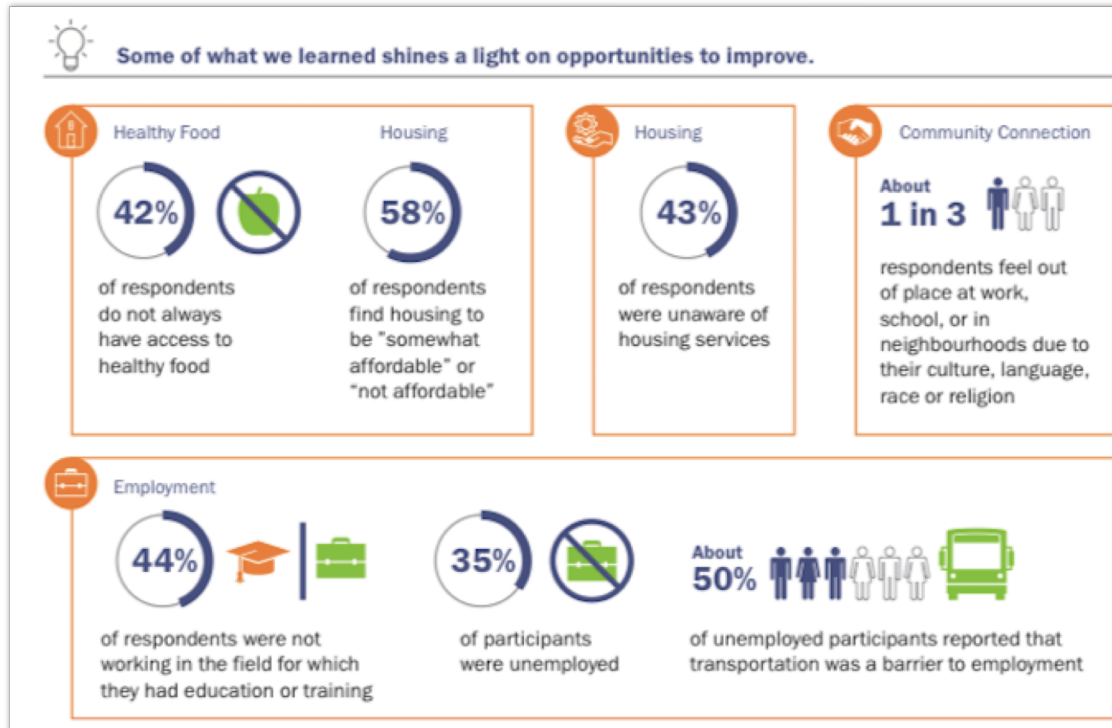


Community Connection



of respondents have friends from different religions and cultures in Guelph-Wellington

Survey Results: challenges



- Survey reports that services with slightly lower awareness include:
 - Employment, financial, and housing supports.

Settlement Services in Guelph

- Total of 33 settlement services in Guelph
Were easily searched .
- Of those 33 only about 7 specified
- What classes of immigrants they work with
- Non-profit vs Government funded.
- Boundaries in which they deliver services?
 - Not specified

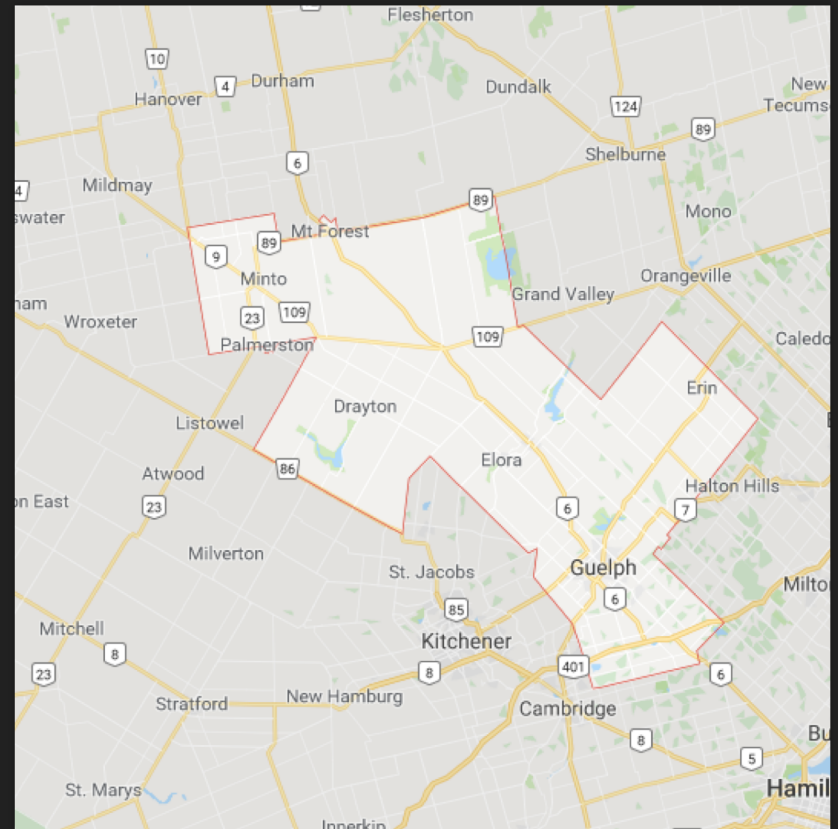


Wellington County

- Town of Erin
- Township of Wellington North
- Centre Wellington (Elora and Fergus)
- Town of Minto (Clifford)
- Township of Wellington
- Township of Mapleton (Drayton)
- Township of Guelph Eramosa
- Township of Puslinch

Settlement Services in Wellington County

- Total of 6 services that appeared.
- Main Service Provider
 - Wellington County Settlement Services.
 - Located further apart in different townships.



Urban Vs Rural

Guelph	Wellington County
<ul style="list-style-type: none">- Diverse services that are offered.- Main services are all centered in one area.- Government funded services tend to help more economic class immigrants.- Non- profit more for refugees- Public transit available	<ul style="list-style-type: none">- Services are more dispersed- There is limited diversity in the services provided- Does not specify the class of immigrants served.- No public transit- Broadband connectivity can be an issue

Guelph vs Wellington County

- The proportion of immigrants that settle in the County is much smaller than the City
- The county challenges:
 - Employers and immigrants
- For Ex: Minto
 - Rent is high
 - Access to public transit
 - Challenge of locating immigrant service provision

Next Steps

- Looking at areas that are successful:
 - Areas that have been able to retain immigrant population
 - Community toolkits
 - Implement strategies elsewhere
- Conduct surveys to better understand the challenges in Wellington County.