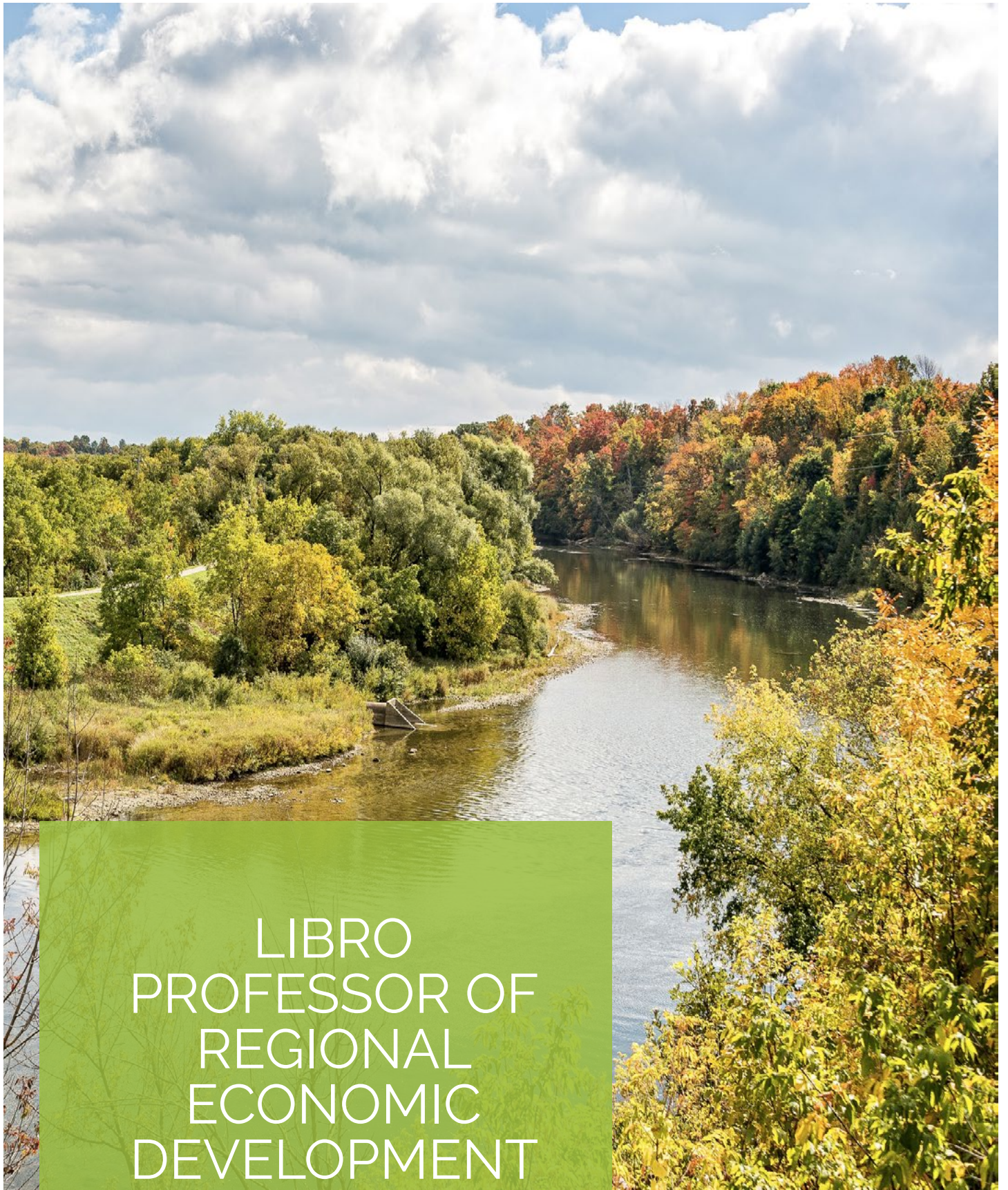


2017-2018 Annual Report



LIBRO
PROFESSOR OF
REGIONAL
ECONOMIC
DEVELOPMENT

UNIVERSITY
of GUELPH

School of
Environmental Design
& Rural Development

The Libro Professor of Regional Economic Development was established in 2016 through the generous donations from Libro Credit Union, the Klosler family, and the Roberts family. Together, a \$1 million gift was created to serve as a catalyst for enhancing regional economic development in Southwestern Ontario.



THE LIBRO PROFESSOR

Dr. Ryan Gibson began the Libro Libro Professorship of Regional Economic Development in the summer 2016. Based in the School of Environmental Design and Rural Development, Dr. Gibson has a deep interest in and respect for communities, their people, and the events that shape their futures. He is interested in regional and economic development, multi-community collaborations, governance, philanthropy, and public policy. Since joining the University of Guelph, Dr. Gibson has been actively engaged with community leaders, nonprofit organizations, and businesses throughout southwestern Ontario and beyond.

This report provides an overview of the achievements over the 2017-2018 year. Teaching, research, and service activities are briefly discussed. Throughout the report hyperlinks to further information can be found online. Details on activities, research initiatives, and resources can always be found at www.ruraldev.ca.



TEACHING

Over the past year the Libro Professor taught four courses in the School of Environmental Design and Rural Development: Rural Research Methods, Regional Planning, Economic Development, and Integrated Research Methods. Further, independent courses were facilitated focusing on rural immigration, recreation and trails, and place-based development, innovation, cannabis, and public policy.

RESEARCH

The Libro Professor actively engages in many research initiatives focused on economic development, public policy, philanthropy/wealth, and employment. Illustrative descriptions of the research initiatives are enclosed in this report. Further details can be found at www.ruraldev.ca.



SERVICE AND ENGAGEMENT

The Libro Professor has been actively involved in service and community engagement commitments within the university, within the region, and within the professional community. The Libro Professor met with community groups, delivered presentations and workshops, provided guest lectures, wrote articles/book chapters, reports. He is also actively engaged in organizing events that bring people together to discuss the future rural regions.



SCHOOL OF ENVIRONMENTAL DESIGN AND RURAL DEVELOPMENT

The School of Environmental Design and Rural Development brings together major academic fields concerned with creating strong communities in Canada and around the world. The four highly respected units that have come together to form SEDRD share many common goals but approach them in different and complementary ways.

This model reflects the imperatives in building authentic communities where planners, leaders, communicators, landscape architects, the citizens, and politicians all play important interdependent roles in strengthening communities.

BUILDING HQP CAPACITY

Over the past year, the Libro Professor provided opportunities for graduate students to enhance their skills and capacities. These opportunities include engagement as research assistants on research initiatives, support networking with key actors in the region, and financing attendance at regional, national, and international conferences, events, and workshops.

17 STUDENTS HIRED AS
RESEARCH ASSISTANTS



17 STUDENTS SUPERVISED
AT EITHER MASTER OR
DOCTORAL LEVEL



34 OPPORTUNITIES FOR STU-
DENTS TO ATTEND CON-
FERENCES & WORKSHOPS



ILLUSTRATIVE STUDENT ENGAGEMENT

ICRPS 2018

Stephen Penner participated in the 2018 International Comparative Rural Summer Institute held in Tuskegee, Alabama. This year's event focused on social justice, rural and natural resource policy. [For more information on ICRPS click here.](#)



GOOD CONFERENCE

Valencia Gaspard, Alex Petric, and Ashleigh Weeden shared their insights on open data and innovation in rural communities at the 2018 GOOD Conference in Barrie. They contributed to a panel about the 'networked rural' and the opportunities and challenges of open data initiatives in rural communities. [For more details click here.](#)



During the International Geography Union/ Canadian Association of Geographers conference, Neil Stoop shared his research on defining rural in Ingersoll, Ontario. The conference brought together researchers and practitioners from across Canada and internationally.



Graduate students worked with economic development planners at the Economic Development Council of Ontario Conference in Toronto. A series of five white papers on regional economic development issues were generated from this engagement. [For more details click here.](#)

IGU/CAG CONFERENCE

EDCO CONFERENCE

GRADUATE STUDENTS

Illustrative list of graduate students supervised by the Libro Professor. Outputs of their work, when available, can be found at www.ruraldev.ca.



OMOTAYO APAMPA

MSc RPD Student

Research: The immigrant experience and challenges in rural communities

Hometown: Lagos, Nigeria



JODI-ANN FRANCIS

MA Graduate

Research: Examining Halifax as a welcoming community for international post-secondary students

Hometown: Kingston, Jamaica

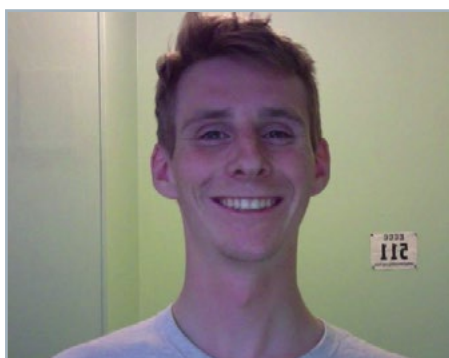


TRACEY HARVEY

PhD Student

Research: Examining the role of cannabis legalization in the Kootenays region of British Columbia

Hometown: British Columbia



TIMOTHY HUNTING

MSc RPD Student

Research Interests: assets of tacit knowledge transfer, as a mechanism to enhance the development of the Trans Canada Trail

Hometown: Cowansville, Québec



STEPHANIE PATZER

MSc RPD Student

Research Interests: participatory community development, particularly in Latin America

Hometown: Ottawa, Ontario



ALEX PETRIC

MSc RPD Student

Research: exploring the capacity and potential for Open Data systems and networks in rural Ontarian communities

Hometown: Brampton, Ontario



MATT RAPKE

MSc RPD Student

Research Interests: analyzing the peripheralization of rural Ontario

Hometown: Markdale, Ontario



MALLORY SMITH

MSc RPD Student

Research: Examining how rural communities in Ontario can enhance immigration attraction and settlement

Hometown: Hamilton, Ontario



NEIL STOOP

MSc RPD Student

Research: understanding what 'rural' means to different groups and how these varied definitions impact peoples' lives

Hometown: Dereham Centre, Ontario



MENAKAH YOHARAJA

MSc RPD Student

Research Interests: immigration; mental health and housing; accessible transportation for disadvantaged groups; and poverty alleviation

Hometown: Cornwall, Ontario

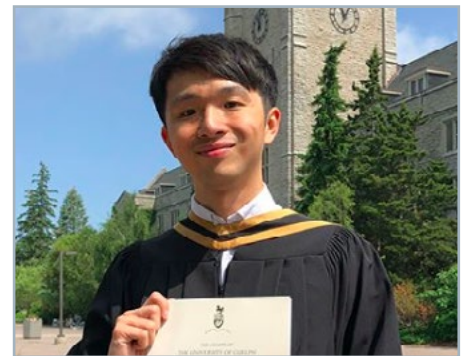


ASHLEIGH WEEDEN

PhD Student

Research: Examining how place-based innovation ecosystems have been utilized in rural communities

Hometown: Elora, Ontario



JEREMY WONG

MSc RPD Graduate

Research Interest: International rural development planning

Hometown: Hong Kong

INFLUENCING PUBLIC POLICY

Influencing change in public policy is a key activity of the Libro Professorship. Over the past year, the Professor has met with community-based organizations, nonprofit organizations, provincial governments, and national governments to provide evidence, knowledge, and insights on rural and regional economic development. Four key activities from the past year are outlined below.

1 HOSTED NATIONAL MEETING OF PROVINCIAL MINISTRIES ON RURAL DEVELOPMENT

A workshop with provincial and territorial government departments responsible for rural and regional development was organized by the Libro Professor in partnership with the Canadian Rural Revitalization Foundation in Nelson, British Columbia. The workshop built connections across the governments, explored rural development policies and programs, and identified new rural trends. A follow up event will take place in fall 2018.

2 SUBMISSION TO HOUSE OF COMMONS COMMITTEE ON BROADBAND INTERNET IN RURAL AREAS

Rural communities throughout Canada experience unequal access to high-speed Internet. This 'disconnect' hinders the ability of rural residents, businesses, governments, and nonprofit organizations. Recently, Dr. Gibson was involved in a formal submission to the Government of Canada, advocating for changes to how broadband connectivity is delivered in rural and northern communities. [Click here for more details.](#)

3 SUBMISSION OF PRE-BUDGET RECOMMENDATIONS TO PROMOTE ECONOMIC GROWTH

As part of the Canadian Community Economic Development Network's Policy Committee, Dr. Gibson contributed to a submission to the pre-budget submission for the 2019 federal budget. The submission recommends ways in which the federal government could facilitate economic development and growth. [Click here to read the full federal budget recommendations.](#)

4 WHAT IS THE FUTURE OF RURAL CANADA - CBC INTERVIEWS

Recent transformations in global economies have impacted rural places throughout Canada. This has led to the question, "What is the future of rural communities throughout Canada?". Dr. Gibson participated in a series of 14 radio interviews as part of CBC's series called Transformations. The interviews focused on the factors influencing the future of rural communities, the resilience of rural communities, and illustrations of successful rural communities. [Click here for more details.](#)

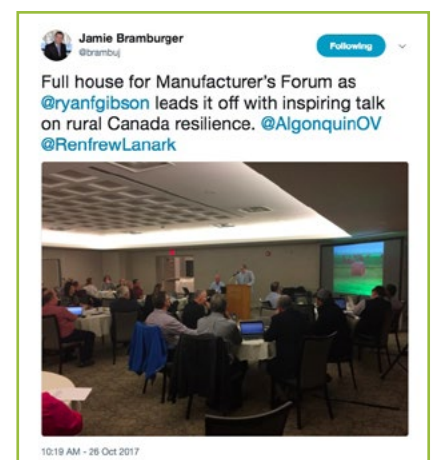
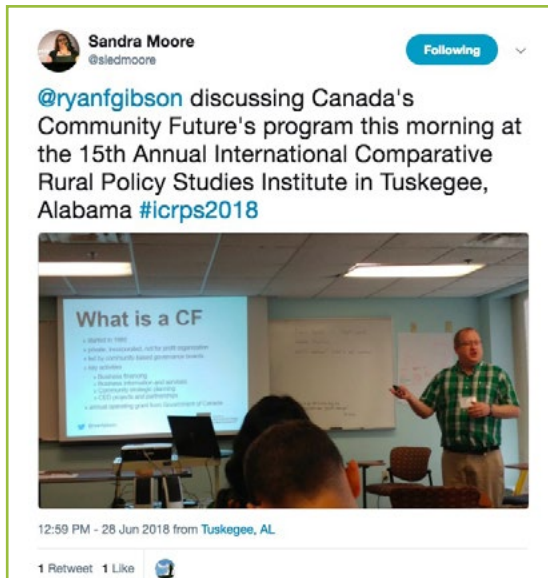
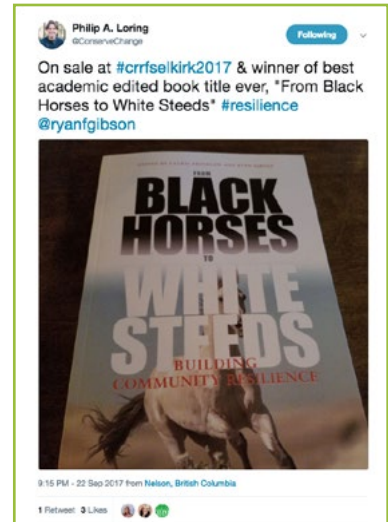




STAY CONNECTED ON SOCIAL MEDIA

Many of the Libro Professor's activities, achievements, and engagements have been documented through social media, both on Twitter (@ryanfgibson) and on LinkedIn (www.linkedin.com/in/ryanfgibson/). A sample of mentions of Dr. Gibson's work from Twitter are presented here.

Follow Dr. Gibson on Twitter and LinkedIn for the most recent updates!





ADVANCING RESEARCH

The Libro Professor is actively engaged in research initiatives focused on critical topics of regional and rural development. In 2017-2018, Dr. Gibson received funding for **5 new** research initiatives worth in excess of \$200,000. These research initiatives focus on rural infrastructure, corporate social responsibility, rural revitalization, cannabis legalization, and the role of charities in addressing community priorities. These research initiatives engage researchers from across Canada and internationally, university students, businesses, and community-based organizations.

Graduate students are engaged in each of these research initiatives. This provides opportunities for gaining employable skills, building networks, and enhancing their knowledge.

In addition to the new research initiatives, Dr. Gibson remains actively engaged in 7 research initiatives. A full list of these research initiatives, along with online resources, can be found on page 18.

A few illustrative research projects are listed on the next two pages. Further information on all research initiatives can be found at www.ruraldev.ca.



BUILDING THE FUTURE:

Rural Infrastructure and Regional Economic Development 2018-2021

Are rural Ontario communities capable of responding to infrastructure pressures and opportunities? How does that capacity – or lack thereof – affect a community's current and future long-term economic development? Using surveys, workshops, content analysis, and case studies, this research initiative will examine the capacity of different communities in rural Ontario to respond to infrastructure pressures and how these responses impact their short and long-term economic well-being, to develop recommendations for addressing these issues through both immediate and long-term policy alternatives.

Communities of all sizes must balance fiscal realities, changing economies, aging infrastructure, changing demographics, and a challenging climate as they work to manage their core infrastructure assets and accommodate and/or address new infrastructure and service demands. This research initiative will directly support rural Ontario's economic vitality by providing three key benefits: enhanced understanding of the diversity and varying levels of rural community capacities, improved and more nuanced public policy, and enhanced rural infrastructure development programming.

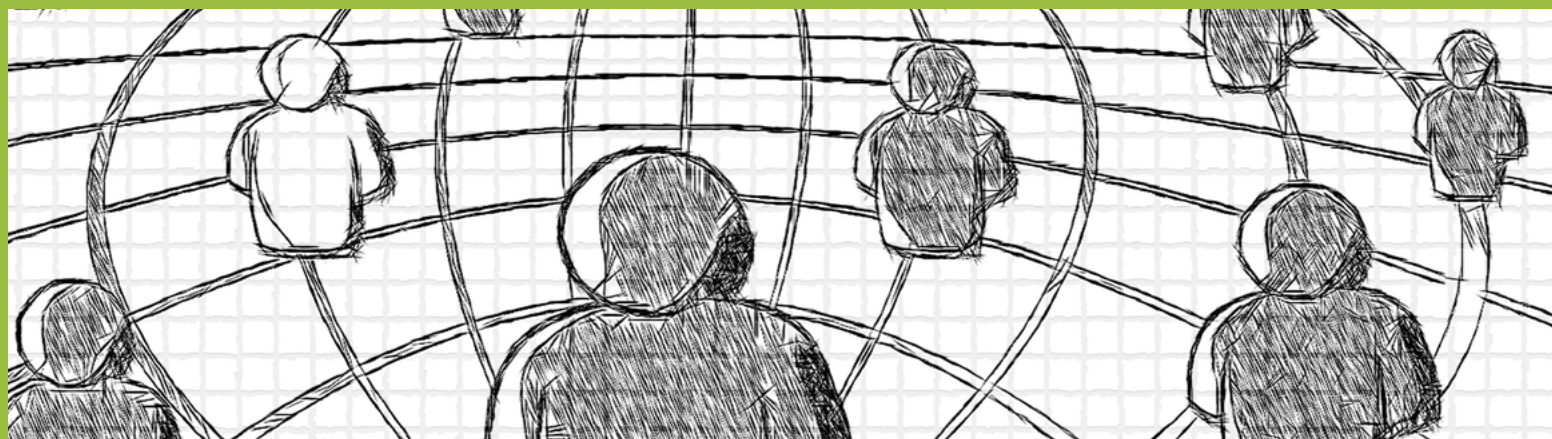
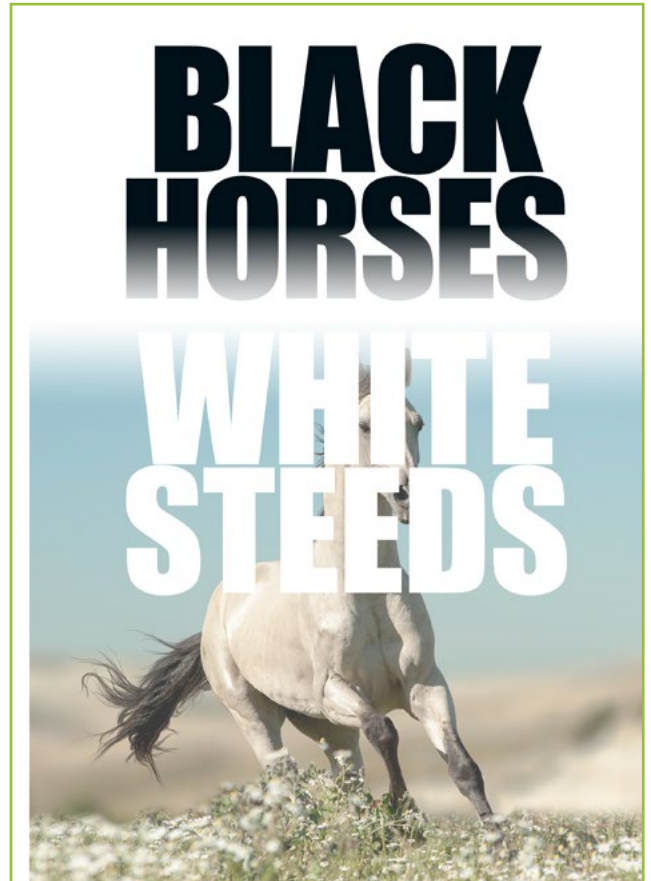
This initiative is funded through the Ontario Ministry of Agriculture, Food and Rural Affairs-University of Guelph Partnership Program. [Find out more about this initiative by clicking here.](#)

BUILDING COMMUNITY RESILIENCE

2016-2017

From Black Horses to White Steeds celebrates and critiques the dynamics of innovation, governance, and culture in place. Case studies from both sides of the North Atlantic illustrate episodes of “turning around”: evolution, transformation, and visionary strategy that breathe new life into the term “think global, act local.” They offer a narrative focused on the strength of local initiatives, the impacts of collective power, and re-envisioning local assets. They explore how various “dark horses” including minorities, small towns, peripheries, Aboriginal communities, those with little money, status, voice, or political leverage can rise to the occasion and chart livable futures.

This initiative was funded by the Social Sciences and Humanities Research Council of Canada. [For more information click here.](#)



RURAL POLICY LEARNING COMMONS

The Rural Policy Learning Commons is a 7-year initiative to enhance knowledge mobilization among rural researchers, students, policy makers, businesses, and community leaders. Major objectives of the RPLC are to build rural capacity and strengthen relationships to inform rural research and policy. Some members focus on provincial and regional research while others concentrate on international comparative analysis

through working relationships among institutions and individual partners.

The Rural Policy Learning Commons hosts a series of events and activities to enhance connections and sharing knowledge. Watch their website for upcoming free webinars, events, and workshops.

This initiative is funded by the Social Sciences and Humanities Research Council of Canada. [For more information click here.](#)

OUTPUTS

ARTICLES, BOOKS, AND BOOK CHAPTERS

Brinklow, L. & **Gibson, R.** (2017). *From dark horses to white steeds: Building community resilience*. Charlottetown: Island Studies Press.

Gibson, R. (*forthcoming*). Seeking multi-level collaborative governance. In K. Vodden, D. Douglas, S. Markey, S. *Minnes, & W. Reimer (Eds.), *The Theory, Practice and Potential of Regional Development: The Case of Canada* (pp. 80-97).

Gibson, R. & Annis, R. C. (*forthcoming*). Rural immigration and welcoming communities, In M. Vittuari, M Pagani, J. Devlin, J. I. Stallmann, & T.G. Johnson (Ed.), *Routledge Handbook of Comparative Rural Policy: Theories, Methods, and Case Studies*.

Gibson, R. & *Barrett, J. (*forthcoming*). Philanthropic organizations to the rescue? Alternative funding solutions for rural sustainability. In Greg Halseth, Sean Markey, & Laura Ryser (Ed.), *Integrative Services and Service Infrastructure for 21st Century Rural Sustainability*.

Gibson, R. & Brinklow, L. (2017). Changing the narrative: Rural as resilient and sustainable. In Press, In L. Brinklow and R. Gibson (Eds.), *From Black Horses to White Steeds: Building Community Resilience* (pp. 1-9). Charlottetown: Island Studies Press.

Gibson, R., Bucklaschuk, J., & Annis, R. (2017). Working together: Collaborative response to welcoming newcomers in Brandon, Manitoba. In G. Bonifacio and J. Drolet (Eds.), *Immigration and the small city: Canadian experience and perspectives* (pp. 35-53).

Safdar, S., Gui, Y., Annis, R., **Gibson, R.**, & Berry, J. (2017). Intercultural relations in Canada. In Berry, J. (Ed.), *Mutual Intercultural Relations* (pp. 353-374). Cambridge: Cambridge University Press.

REPORTS

Ashton, B., *Breen, S., *Gaspard, V., **Gibson, R.**, Hallström, L., *Kelly, W., Mealy, R., *Minnes, S., & Pollak, A. (2018). *Broadband connectivity in rural Canada*. Ottawa: House of Commons Committee Standing Committee on Industry, Science, and Technology.

Gibson, R., Breen, S., Markey, S., Ashton, B., Brinklow, L., Boyle, C., *Gaspard, V., Lauzon, A., Mealy, R., *Minnes, S., Pollak, A., & Pollett, C. (2017). *Infrastructure impacts on rural development and economics*. Ottawa: Senate Committee on National Finance.

*Gaspard, V., Longboat, S., & **Gibson, R.** (2017). *From research to policy: 2017 Rural Symposium Report*. Guelph: Ontario Ministry of Agriculture, Food and Rural Affairs.

*Gaspard, V., *Epp, S., Longboat, S., & **Gibson, R.** (2018). *Projects of practice: 2018 Rural Symposium Report*. Guelph: Ontario Ministry of Agriculture, Food and Rural Affairs.

* student contributor

PRESENTATIONS

Gibson, R. (2018, May). Transitioning Power to the Regions? The Canadian Experiment with Rural Regional Governance. Presented at the Regional Centres and the Sustainability of Canada's Rural and Northern Landscapes conference, Thunder Bay, Ontario.

Santi, N., Foster, K., **Gibson, R.**, Lovitt, N., & Bennett, S. (2018, May). Community Collaboration: Panel Discussion. Presented at the Inspiring Results: Working Together to Make Great Things Happen conference, Halifax, Nova Scotia.

Gibson, R. (2018, May). [Place, Collaboration, and Innovation: Canadian Perspectives for Building Vibrant Rural Futures](#). Presented at the Inspiring Results: Working Together to Make Great Things Happen conference, Halifax, Nova Scotia.

Gibson, R. (2018, March). [Community Development Tools for Advancing Recreation](#). Presented at the Recreation: Make it Matter conference, Winnipeg, Manitoba.

Gibson, R. (2018, February). [Re-embedding wealth in rural areas](#). Presented at the Community Wealth Forum: Creating Public Benefit from Individual Legacies Workshop, Fergus, Ontario.

Gibson, R. (2018, February). Wealth Mobility: Implications for Rural Development and Revitalization. Presented at the Community Wealth Forum: Creating Public Benefit from Individual Legacies Workshop, Cobourg, Ontario.

Gibson, R. (2017, November). Continual Change: The Future of Rural Economic Development. Presented at the North Wellington Joint Economic Development Workshop, Drayton, Ontario.

Gibson, R. (2017, November). [Gazing into the Crystal Ball: Trends in Regional Economic Development](#). Presented at the Collaboration for Success Conference, Kingsville, Ontario.

Gibson, R. (2017, October). [Reading the Tea Leaves: What Rural Demography Tells Us](#). Presented at the Shift: Thriving in Change - 2017 Columbia Basin Symposium, Kimberley, British Columbia.

Gibson, R. & MacDonald, T. (2017, October). Strategies to Build Sustainable Regions: Building Thriving Workforces. Presented at the Shift: Thriving in Change - 2017 Columbia Basin Symposium, Kimberley, British Columbia.

Gibson, R. (2017, October). [Embracing Opportunities: The Future of Rural and Manufacturing](#). Presented at the The Future of Manufacturing in Renfrew County conference, Pembroke, Ontario

Gibson, R. (2017, October). [Community development and recreation: Lessons from across Canada](#). Presented at the 2017 Saskatchewan Parks and Recreation Conference, Saskatoon, Saskatchewan.

Gibson, R. (2017, October). Rural Futures: The Challenges and Opportunities to Building Vibrant and Sustainable Rural Futures. Presented at the All the Right Ingredients conference, Exeter, Ontario.

Gibson, R. (2017, October). Trends in Regional Economic Development: The Provincial Landscapes. Presented at the OMAFRA Economic Development Division Managers' Forum, Fergus, Ontario.

Neuls, E., Butler, L., **Gibson, R.**, Exner-Pirot, H., & Willy, S. (2017, September). Value Added Partnership for Prosperity. Presented at the Different By Design: Exploring Innovation for Rural Prosperity conference, Nelson, British Columbia.

** student contributor*

Gibson, R. (2017, September). What Makes Good Provincial Rural Policy? Different By Design: Exploring Innovation for Rural Prosperity conference, Nelson, British Columbia.

Gibson, R., Furst, B., Markey, S., *Stoop, N., & Vodden, K. (2017, September). Place-Based Endowments in the Periphery: Changing the Dynamics of Rural Planning. Different By Design: Exploring Innovation for Rural Prosperity conference, Nelson, British Columbia.

INVITED LECTURES

Gibson, R. (2018, July). Advancing rural economic development through Canada's Community Futures Program. Presentation delivered at the 2018 International Comparative Rural Policy Summer Institute at Tuskegee University in Tuskegee, Alabama, USA.

Gibson, R. (2018, June). Qualitative Research Methods - Key Informant Interviews. Presentation delivered at the 2018 International Comparative Rural Policy Summer Institute at Tuskegee University in Tuskegee, Alabama, USA.

Gibson, R. (2018, July). Qualitative research methods - Key informant interviews. Presentation delivered at the 2018 International Comparative Rural Policy Summer Institute at Tuskegee University in Tuskegee, Alabama, USA.

Regoli, F., & **Gibson, R.** (2017, July). Community Futures: Canada's Rural Entrepreneurship Program. Presentation delivered at the 2017 International Comparative Rural Policy Summer Institute in Barcelona, Spain.

ONLINE RESOURCES

Laurie, B., **Gibson, R.**, *Rich, K., O'Keeffe, B., & Jennings, A. (2017). [From Black Horses to White Steeds: Building Community Resilience](#). Rural Policy Learning Commons Webinar Series, Brandon, Manitoba.

Gibson, R. (2018). [The future of rural Canada interview with CBC Radio Ottawa Morning](#).

Gibson, R. (2018). [Transitioning rural communities into the global economy](#). Office of Graduate and Postgraduate Studies, University of Guelph.

*Weeden, A. (2018). [Where do rural communities fit into the innovation economy?](#) Office of Graduate and Postgraduate Studies, University of Guelph.



RESEARCH GRANTS

PRINCIPAL INVESTIGATOR

Building for the Future: Rural Infrastructure and Regional Economic Development NEW

Ontario Ministry of Agriculture, Food and Rural Affairs (2018-2021 | \$143,000)

Examining Local Economic Development: An International Comparison between Ontario and Ireland

Social Sciences and Humanities Research Council of Canada Institutional Grant (2017-2018, \$1,500)

Exploring the Role of Place-Based Collective Endowments in the Canadian Periphery

Social Sciences and Humanities Research Council of Canada Insight Grant (2017-2021 | \$205,726)

Making a Difference? Evaluating Rural Development Policy Interventions

Ontario Ministry of Agriculture, Food and Rural Affairs (2017-2020 | \$139,000)

Economic Implications of Policy Change in Rural Regions: Implications of Legalizing Cannabis in the Kootenay Region NEW

Mitacs Accelerate Program in partnership with Community Futures Central Kootenays (2018-2020 | \$60,000)

CO-INVESTIGATOR

Évaluation du rôle et des actions de fondations subventionnaires canadiennes en réponse à l'enjeu des inégalités sociales et des défis environnementaux NEW

Social Sciences and Humanities Research Council of Canada Partnership Grant (2018-2024 | \$2,500,000)

Primary Investigator: Jean-Marc Fontan (Université du Québec à Montréal)

Innovations in Corporate Social Responsibility and impacts on mine-community relations: case studies from Canada and the Philippines NEW

Social Sciences and Humanities Research Council of Canada Insight Grant (2018-2021)

Primary Investigator: Nonita Yap (University of Guelph)

Precarious Employment in Rural Ontario

Ontario Ministry of Agriculture, Food and Rural Affairs

Primary Investigator: Al Lauzon (University of Guelph)

Regional Workforce Development in Rural British Columbia

Social Sciences and Humanities Research Council of Canada Partnership Development Grant (2016-2019 | \$240,000)

Primary Investigator: Terri MacDonald (Selkirk College)

Rural Policy Learning Commons

Social Sciences and Humanities Research Council of Canada Partnership Grant (2015-2021 | \$2,500,000)

Primary Investigator: Bill Ashton (Brandon University)

Rural Revitalization for Health and Shared Prosperity NEW

Social Sciences and Humanities Research Council of Canada Connection Grant (2018-2019 | \$25,000)

Primary Investigator: Lois Berry (University of Saskatchewan)

CONFERENCE AND EVENT ORGANIZING

2018 Rural to Rural Conference

Blyth, Ontario | Member of the Planning Committee

2018 Rural Symposium

Guelph, Ontario | Member of the Planning Committee

Health and Shared Prosperity Conference

Saskatoon, Saskatchewan | Member of the Communications Committee

International Conference on the Governance of Geography

Québec City, Québec | Co-chair of the Planning Committee

North Atlantic Forum 2019 Conference

St John's, Newfoundland and Labrador | Member of the Planning Committee



LOOKING FORWARD

1 UNDERSTANDING RURAL REGIONAL INFRASTRUCTURE

The upcoming year will be busy as the new OMAFRA research initiative focused on regional collaboration for infrastructure and regional economic development project is launched. Watch for more details emerging from the project over the next year!

2 CREATION OF A LIBRO PROFESSOR ADVISORY COMMITTEE

In the summer of 2018, the Libro Professor of Regional Economic Development Advisory Committee will be established. The Advisory Committee will assist in building connections through the region, assist in knowledge mobilization, and help to identify key opportunities throughout the region.

3 SMART SPECIALIZATION - ICRPS 2019

The Libro Professor has been invited to engage in the 2019 International Comparative Rural Policy Summer Institute in Rovaniemi, Finland. The 2019 Summer Institute will be hosted by the University of Lapland and focus on place-based development and smart specialization.

4 CONTINUED ENGAGEMENT WITH SOUTHWESTERN ONTARIO COMMUNITIES

Over the past year, the Professor has met with community leaders, community-based organizations, and regional stakeholders from across Southwestern Ontario. This engagement continues in the upcoming year.



STAY CONNECTED



gibsonr@uoguelph.ca



www.ruraldev.ca



[@ryanfgibson](https://twitter.com/ryanfgibson)



<https://www.linkedin.com/in/ryanfgibson/>

IDEAS FOR RESEARCH? QUESTIONS THAT NEED TO BE RESOLVED?

Do you have a question that you would like answered? Could your organization benefit from someone examining an issue you are encountering? If so, let us know! We encourage individuals and groups/organizations to propose ideas that could be pursued by students and faculty at the School of Environmental Design and Rural Development at the University of Guelph. The submission of an idea does not need to be lengthy. Rather, it should provide enough information for someone to understand the current issue and why it is important. All ideas will be shared with students and faculty members. Should someone be interested in your idea, they will contact you directly. Unfortunately, we can not guarantee someone will be able to take up your question. [Click here to submit an idea!](#)

The logo of the University of Guelph, featuring the text "UNIVERSITY of GUELPH" in a serif font, with "of" in a smaller, italicized font, all in white on a black square background.

UNIVERSITY
of GUELPH

**School of
Environmental Design
& Rural Development**

LIBRO PROFESSOR OF
REGIONAL ECONOMIC
DEVELOPMENT

www.ruraldev.ca